

Navigation
NATION

susan g.
komen. 

2025 Navigation Nation Summit Program

The Navigator in All of Us:
The Many Faces of Navigation



AstraZeneca 

 **MENARINI**
group

Stemline®
A Menarini Group Company

 **MERCK**

 **NOVARTIS**

 **Pfizer**

THE NAVIGATOR IN ALL OF US: The Many Faces of Navigation

10:00 a.m. – 10:10 a.m.

WELCOME AND OPENING REMARKS

Kelley Moultry, MPH, MCHES, CPF, Susan G. Komen®

10:10 a.m. – 10:40 a.m.

KEYNOTE: MANY FACES OF NAVIGATION

SPEAKER: Zarek Mena, OPN-CG, SHARE Cancer Support

Hear how a range of roles, from CHWs to caregivers, are shaping the navigation experience and supporting care across settings.

10:40 a.m. – 11:40 a.m.

SESSION 2 – PANEL: CULTURALLY HUMBLE CARE STARTS HERE

SPEAKERS: Ash Davidson, The Cancer Network: LGBTQIA+ Patient Advocacy

Shylah Dunn, PMP, The Cancer Network: LGBTQIA+ Patient Advocacy

Brooks Fuentes, Young Survival Coalition (YSC)

Elizabeth Gonzalez Ibarra, CHW, Migrant Clinicians Network (MCN)

Nilsa Padilla, Migrant Clinicians Network (MCN)

Hear inclusive communication strategies and adaptable tools to serve patients with diverse cultural, social and identity needs.

11:40 a.m. – 11:50 a.m.

BREAK

11:50 a.m. – 12:30 p.m.

SESSION 3 – PANEL: SPOTLIGHT TALKS – SUSTAINING NAVIGATION IN A CHANGING LANDSCAPE

SPEAKERS: Karen Costello, MSS, LSW, OSW-C, American Cancer Society National Navigation Roundtable (NNRT)

Gwin Jackson, M.Ed., Susan G. Komen®

Kim Samuels, BS, ARDMS, ARRT, RT(R)(M), National Consortium of Breast Centers (NCBC)

Engage with current topics in reimbursement, policy, certification, career growth and how to position navigators for impact and sustainability within health care systems. Introduce the Oncology Navigation Standards as a foundation for high-quality, person-centered care and frame the day around real-world competencies.

12:30 p.m. – 1:00 p.m.

SESSION 4: BEYOND THE JOB DESCRIPTION: SUPPORTING NAVIGATORS AS PEOPLE

SPEAKER: Elizabet Altunkara, LMSW, SIFI, Susan G. Komen®

Learn skills for navigating the end of the patient-navigator relationship while sustaining the workforce through emotional intelligence, healthy boundaries and peer support.

1:00 p.m. – 1:30 p.m.

LUNCH BREAK

1:30 p.m. – 2:00 p.m.

SKILL-BUILDING BREAKOUT SESSION CONCURRENT 1A: NAVIGATING CLINICAL TRIALS WITH CONFIDENCE

SPEAKER: Sabrina Mayhew, PhD, RN, CN-BN, BreastCancerTrials.org

Identify barriers to clinical trial access and apply practical navigation strategies to connect patients with opportunities for innovative care.

SKILL-BUILDING BREAKOUT SESSION CONCURRENT 1B: STRENGTHENING PATIENT-PROVIDER RELATIONSHIPS

SPEAKERS: Sue Friedman, DVM, FORCE

Angel Rodriguez, MD, Natera

Learn how to help patients understand their diagnosis, feel confident in shared decision-making and seek second opinions when needed.

2:00 p.m. – 2:30 p.m.

SESSION 5: FINANCIAL NAVIGATION: BEYOND ASSISTANCE

SPEAKER: Monica Bryant, Esq., Triage Cancer

Learn how to help patients optimize insurance, access public benefits and prevent financial toxicity through proactive screening and resource alignment, promoting financial wellness.

2:30 p.m. – 3:00 p.m.

SESSION 6: BUILD YOUR RESOURCE KIT

SPEAKERS: Jackie Hess, MSW, LSW, Family Reach

Olive Hope, Living Beyond Breast Cancer

Katrina Johnson, Pfizer (patnav.org)

Miranda Zinn, LMSW, OSW-C, Susan G. Komen®

Highlight resources from partners, submissions from trainees and Komen's resource repository.

3:00 p.m.

CLOSING REMARKS

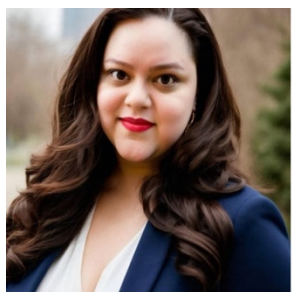
Julie McMahon, MPH, Susan G. Komen®

SPEAKER BIOS



KELLEY MOULTRY, MPH, MCHES

Kelley Moultry is the program manager of the Community Health Training Program at Susan G. Komen®, where she leads national education and training initiatives to strengthen oncology patient navigation. Kelley holds a Master of Public Health (MPH) with a concentration in Health Equity from the University at Buffalo and has over 12 years of experience in chronic disease management, patient empowerment and health education. From equipping oncology navigators with the tools and confidence they need to deliver patient-centered care to advancing the standard of care in underresourced communities, Kelley's work reflects a steadfast commitment to health equity, upholding that every individual has access to timely, high-quality health care and support.



ZAREK MENA, OPN-CG

Zarek Mena has extensive experience in the field of oncology patient navigation and works with the Academy of Oncology Nurse Navigators + (AONN+) as well as the ACS National Navigation Roundtable (ACS NNRT). Zarek's passion in serving the underrepresented and historically excluded communities has led to addressing various needs such as food insecurity, cold capping, grant funding, screening and prevention, integrative medicine, as well as financial toxicity. Her firsthand experience as a cancer survivor, caregiver and knowledgeable professional provides much-needed representation in addressing health equity.



ASH DAVIDSON

Ash Davidson (he/they) is a trans advocate, speaker and cancer survivor working at the intersection of health equity, LGBTQ+ visibility and patient experience. Since being diagnosed with breast cancer, Ash draws from his lived expertise to inform training and content with The Cancer Network: LGBTQIA+ Patient Advocacy. His work bridges the gap between clinical intention and patient impact to promote safer, more inclusive and trust-centered care.



SHYLAH DUNN, PMP

Shylah Dunn proudly serves as the project specialist for The Cancer Network: LGBTQIA+ Patient Advocacy. It has always been her passion to create safe, affirming spaces for everyone in her community.

Growing up in a predominantly white, Christian environment, she rarely saw reflections of her own intersectional identity. That absence fueled Shyla's drive to ensure that every Black and brown child she encountered felt seen, welcomed, and empowered by her spirit and

determination. Through that commitment, she's had the privilege to educate and uplift countless individuals. Today, she continues to share that light and purpose through her work with the National Cancer Network, helping to build a more inclusive and compassionate world.



NILSA PADILLA ELÍAS, MPA

Nilsa Padilla Elías serves as the health network and research manager at Migrant Clinicians Network (MCN), working from MCN's Puerto Rico office. In this dual role, she provides strategic and operational oversight of MCN's Health Network program, which ensures continuity of care for mobile patients across the U.S. and beyond. She leads the program's day-to-day operations, supervises a bilingual team, and cultivates partnerships to expand the reach and

impact of patient care coordination efforts.

Nilsa also directs research initiatives that advance MCN's mission, with a focus on improving access and quality care for all. Her research background includes emergency preparedness, mental health promotion and health system responses in Puerto Rico, particularly in contexts of crisis and displacement. She has coordinated studies on substance use, homelessness, Alzheimer's disease and crisis standards of care, and she supports MCN's Institutional Review Board and cross-program research efforts.

She holds a master's degree in public affairs with a concentration in Human Services from the University of Turabo in Puerto Rico.



BROOKS FUENTES

Brooks Fuentes is a program associate at Young Survival Coalition (YSC), where she focuses on community support. In this role, she provides compassionate, personalized support and resource navigation for young breast cancer survivors and thrivers through many of YSC's mission-driven programs.

Brooks brings a diverse background in social science, community outreach and graphic design. Her connection to breast cancer is deeply personal — her mother was diagnosed with metastatic breast cancer at age 46, and Brooks herself was diagnosed at age 36. These experiences ignited a strong passion for connecting with other survivors. Previously, as special programs coordinator at Breast Friends, she established and led the organization's Latinx/Latine program and administered its young survivor initiatives. Bilingual in English and Spanish, Brooks is dedicated to fostering healing, inclusive spaces for the Latinx/Latine community within the cancer support landscape.



ELIZABETH GONZALEZ IBARRA, BA

Elizabeth Gonzalez Ibarra is project coordinator with the education team at Migrant Clinicians Network (MCN). Originally from Texas, she combines her passion about aiding her community, and her interests in Spanish and public health, to make a meaningful impact at MCN.

Elizabeth has supported MCN constituents through numerous roles at the organization. In her previous role as a health network associate, Elizabeth linked people who had to move with medical and social services, ensuring their continuous care despite their mobility. Since 2022, she has also been involved in an ongoing outreach project with Farm Aid, serving as a Spanish Hotline operator to address mental health stigma for farmers and migratory seasonal agricultural workers who needed resources. Her work with the hotline has earned media attention, and she has been featured in several publications for this work.

In 2025, Elizabeth received MCN's Jillian Hopewell Fellowship to support her ongoing education she is pursuing to better serve her community. She completed her community health worker certification in January 2025 to serve as a hotline operator to address mental health stigma for farmers and migratory seasonal agricultural workers. Elizabeth earned a Bachelor of Arts in Spanish with a minor in Public Health from Texas State University in 2021, and she initially joined MCN as an intern that same year.



KAREN COSTELLO, MSS, LSW, OSW-C

Karen Costello, National Navigation Roundtable (ACS NNRT) strategic director. Karen brings 30 years of experience in oncology social work, patient navigation and administration across academic cancer centers, hospitals and nonprofit patient advocacy organizations.

Karen began her social work career with the blood and marrow transplantation team at the Abramson Cancer Center of the University of Pennsylvania before taking on leadership roles at The Leukemia & Lymphoma Society. She later returned to Penn as a cancer center administrator and hematology-oncology navigator, ultimately serving as a practice administrator for Penn Radiation Oncology. Most recently, she served as the senior director of navigation at Cancer Support Community, where she built a global navigation program that has been acknowledged as a best practice in the field.



GWINNETT F. JACKSON, M.ED

Gwinnett (Gwin) F. Jackson is the coordinator for community health training at Susan G. Komen, where she contributes to the development of oncology patient navigation training and coaching initiatives. With a background in nonclinical navigation and adult education, Gwin specializes in designing learner-centered programs that translate complex health care concepts into accessible, actionable content. Her work supports professional development across clinical and nonclinical settings, emphasizing clarity, health literacy and real-world application.



KIM SAMUELS, BS, ARDMS, ARRT, RT®(M)

Kimberly Samuels is a nationally recognized health care executive and advocate with over two decades of leadership in breast health, oncology care and nonprofit innovation. She currently serves as the executive director of the National Consortium of Breast Centers (NCBC), the nation's leading interdisciplinary membership organization dedicated to advancing evidence-based, patient-centered breast care across all clinical settings.

Under Kimberly's leadership NCBC has expanded its national footprint through cutting-edge certification programs, equity-focused education, and strategic partnerships with health care systems, cancer centers and advocacy organizations. Her work emphasizes integrated team-based care, improved navigation across the breast cancer continuum and survivorship as a vital phase of healing.

Prior to leading NCBC, Kimberly held senior leadership roles at Hoag Hospital in Newport Beach, California, where she launched one of the nation's top breast centers and outpatient imaging programs. She also founded and scaled KSI Medical, a wellness-focused health care company that reached over 4,000 providers nationwide.

Kimberly brings a unique blend of hospital operations, clinical education and nonprofit strategy, and is deeply committed to transforming breast cancer care through collaboration, innovation and compassionate leadership.



ELIZABET ALTUNKARA, LMSW, SIFI

Elizabet (Liz) Altunkara, LMSW (she/her) is a Komen Breast Care Helpline manager. She is a licensed master social worker and an accomplished nonprofit professional with a decade of experience in direct service programs, educational content creation and high-impact partnerships. Liz and her team support patients at any stage of their breast cancer journey, provide emotional support and connect them with much needed resources.

Prior to Komen, during her 10 years at the National Eating Disorders Association (NEDA), Liz directed NEDA's Information and Treatment Options Helpline to support individuals and families affected by eating disorders, expanded the Helpline's reach by including the texting service and by establishing partnerships with mission-aligned organizations, led awareness campaigns, directed NEDA's blog content and created the nation's first online resource center, serving as the primary hub for evidence-based, up-to-date eating disorder information. Liz holds a B.A. in Psychology from Princeton University and an M.S. in Social Work from Columbia University.



MONICA FAWZY BRYANT, ESQ.

Monica Fawzy Bryant is a cancer rights attorney, speaker and author, dedicated to improving access to quality information on health care-related issues. She is the co-founder and chief operating officer for Triage Cancer, a national nonprofit organization that provides education on the practical and legal issues that may impact individuals diagnosed with cancer and their caregivers.

Monica is co-author of the first and only book on *Cancer Rights Law*, published by the American Bar Association (ABA) in 2018. In 2019, she received a 40 Under 40 in Cancer Award and in 2015, was awarded the Legacy Advocate Award by a leading young adult cancer organization. She is an adjunct law professor at the University of Illinois at Chicago School of Law, teaching a class on cancer rights. Throughout her career, she has provided close to 1,000 educational seminars for individuals who have been diagnosed with cancer, their caregivers, lawyers, advocates, health care professionals, elected officials and the general public.



JACKIE HESS, MSW, LSW

Jackie Hess is the senior program director at Family Reach, where she leads efforts to remove the financial barriers standing between cancer patients and their treatment. With over a decade of experience in nonprofit program development and management, Jackie is a strategic leader known for driving innovation, expanding impact and strengthening operational effectiveness.

Her expertise lies in leveraging data analysis and strategic planning to enhance program outcomes and ensure efficient use of resources. Jackie excels at mentoring high-performing teams and fostering cross-functional collaboration, all while centering equity and patient experience at the heart of her work. Passionate about health equity, she is committed to building innovative solutions that make cancer care more accessible and supportive for all.



OLIVE HOPE

Olive Hope is the coordinator of health care provider programs at Living Beyond Breast Cancer (LBBC). She graduated from Mount Holyoke College with a degree in critical disability studies. With LBBC, Olive helps organize the Survivorship Series, a program that trains health care providers across the country to lead sessions on key survivorship topics such as sex + intimacy, early menopause and self-care.



KATRINA M. JOHNSON

Katrina Johnson is the U.S. director of advocacy and professional relations at Pfizer Oncology, where she leads national partnerships with patient advocacy organizations to advance equity and improve the cancer care experience, particularly for those impacted by breast cancer. With long-standing leadership in health care and biopharma, Katrina brings deep expertise in strategic partnerships, key account management and stakeholder engagement.

Known for her authenticity and heart-centered approach, Katrina is passionate about ensuring that patients remain at the center of every decision. She is a committed advocate for Pfizer's mission to deliver "breakthroughs that change patients' lives" and continues to champion innovation, collaboration and compassion across the oncology community.



MIRANDA ZINN, LMSW, OSW-C

Miranda Zinn is a licensed master social worker with oncology certification. Currently serving as a Helpline navigator at Susan G. Komen®, she brings extensive experience in providing emotional support, patient education and care navigation. Miranda holds a Master of Social Work degree from Marywood University and is committed to promoting equitable access to cancer care through patient advocacy and empathy.



SABRINA MAYHEW, PHD, RN, CN-BN

Sabrina Mayhew is a certified oncology nurse navigator specializing in clinical trial navigation at BreastCancerTrials.org, a program of Quantum Leap Healthcare Collaborative.

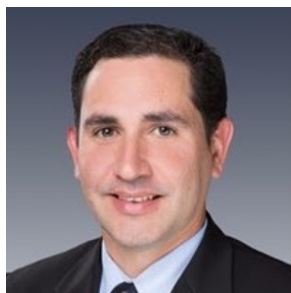
Her journey into breast cancer advocacy and research began in November 2011 after her own breast cancer diagnosis. This personal experience strengthened her dedication to supporting others, leading to active involvement in multiple breast cancer advocacy organizations. Throughout her nursing career, Sabrina has held diverse roles in radiation oncology, research, emergency medicine and as a program manager for a breast cancer survivorship and support program. She also earned a doctorate in nursing, focusing her research on breast cancer patient advocacy and health disparities. In her current role, Sabrina helps patients consider clinical trials as a standard part of their care. Committed to improving access and diversity in clinical trials, she educates individuals about participation and connects them with trials that match their specific breast cancer criteria.



SUE FRIEDMAN, DVM

Sue Friedman was practicing small-animal veterinary medicine when she was diagnosed with breast cancer at age 33, and afterward learned she carried an inherited *BRCA2* mutation. After treatment, she founded the nonprofit organization Facing Our Risk of Cancer Empowered or FORCE in 1999 to help people and families facing hereditary cancer find support and credible, relevant information and research in plain language.

As executive director, Sue has over 26 years of experience directing FORCE's education, research and advocacy programs. As an advocate, Sue has a passion for facilitating informed decision-making, improving health communication between patients and their health care teams and increasing health literacy in society as a whole.



DR. ANGEL RODRIQUEZ

Dr. Angel Augusto Rodriguez is oncology medical director at Natera. Natera is a company with expertise in cell-free DNA technology, which delivers platforms in prenatal care, transplant medicine and oncology. He is a board certified medical oncologist and attended Baylor College of Medicine in Houston, Texas, where he completed his residency in internal medicine and fellowship in hematology and medical oncology.

He was the recipient of a Komen for the Cure Multidisciplinary Breast Cancer grant and specialized in breast oncology at Baylor College of Medicine where he conducted research in breast cancer stem cells, xenograft models and gene expression profiling.

Before joining Natera, Dr. Rodriguez practiced in Houston Methodist Cancer Center where he was director of the Clinical Trials Office and led the Triple Negative Breast Cancer Clinic



JULIE MCMAHON, MPH

Julie McMahon is director of Community Health Programs at Susan G. Komen®, where she leads national efforts to improve access to breast cancer care for underresourced communities. She helped launch Komen's telehealth navigation model and directs initiatives such as the Patient Navigation Training Program, which has reached more than 2,000 navigators. Julie holds a Master of Public Health in Epidemiology from The Ohio State University and a Bachelor of Arts in

Political Science from Denison University. Her expertise spans health equity, patient-centered care models, culturally responsive programming and public policy advocacy. She has authored multiple publications on navigation standards and metastatic breast cancer and serves in national leadership roles with the National Navigation Roundtable. Julie received the 2024 AONN+ Ambassador Award for her work in community health.

Patient Navigation Training Program

The Susan G. Komen® Patient Navigation Training Program is a cornerstone resource for patient navigators seeking to enhance their skills and impact on patient-centered care. Komen's free program equips new navigators with the foundational courses needed to enter the workforce, while also offering experienced navigators opportunities to deepen their expertise, sustain their practice and advance their careers.

More than just training, it's a thriving community, Navigation Nation, dedicated to professional growth and health equity. Navigators can now explore tailored learning journeys designed to meet them where they are, from foundational skills to advanced practice, and use a self-assessment tool to discover the right path for their role and experience. Alongside specialized content and a peer support network, the program helps every navigator grow with confidence and purpose.

Join and learn more at komen.org/navigationnation.

New Learning Journeys Are Here! Find the training path that fits *your* role and experience. With our new **Navigator Learning Journeys** and **self-assessment tool**, you can explore tailored courses, from Foundations to Advanced practice and grow your skills with confidence. Find your journey at: <https://navigationnation.learnupon.com/>

Komen's Center for Public Policy recently shared an update on the changing health insurance landscape. Please check out the full webinar here:

[Patients' Access Webinar: Changing Health Insurance Landscape](#)

FREQUENTLY ASKED QUESTIONS

When and where will the summit be held?

We are excited to hold the Navigation Nation Summit via the Zoom meeting platform on Thursday, Sept. 12, 2024.

How can I download Zoom?

Zoom is available for free download on Windows, iOS and as a mobile app on both Apple and Android devices. To download Zoom on your computer, visit <https://zoom.us/download>. To download Zoom on your smart phone, visit your app store and search for “Zoom.”

What if I didn’t receive a Zoom link after registering?

You should have automatically received a Zoom link after registering. If you didn’t receive a Zoom link, reach out to navigationnation@komen.org.

What if I have trouble logging into the summit?

As a best practice, try restarting your computer prior to logging into Zoom. If you continue to have issues, visit this [troubleshooting](#) page on Zoom’s website.

Will the sessions be recorded?

Yes, all summit sessions will be recorded and posted on Komen’s Navigation Training Portal for members of our training community. Contact navigationnation@komen.org to become a part of the Navigation Nation community, where you can access more free courses, trainings and resources, and connect with other professionals and patient advocates.

Is the summit continuing education?

Documentation of participation in the summit can be submitted to support “on the job” experience requirements to pursue accredited certification under National Consortium of Breast Centers. The Academy of Oncology Nurse & Patient Navigators (AONN+) will accept verification of participation toward the continuing education requirements for AONN+ certification (non-accredited). If you are a patient navigator and need verification for pursuing or maintaining certification, or for your employer, please reach out to navigationnation@komen.org.

What is Komen’s Navigation Nation Training Community?

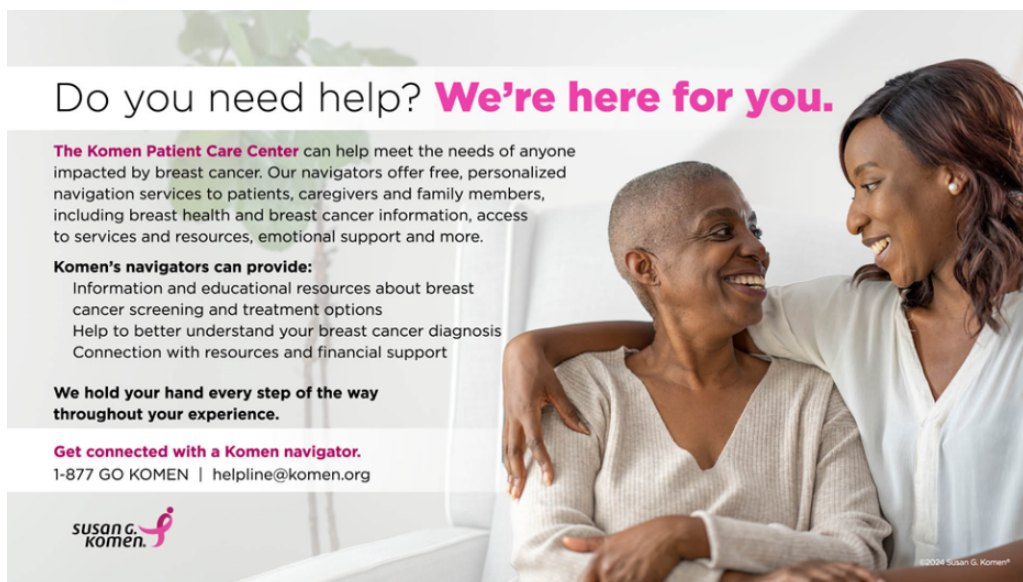
Komen’s supportive, interactive Navigation Nation learning community is designed to enhance professional skills, provide a peer network and support system, and give navigators tools and resources to meet the needs of those experiencing breast cancer inequities. Navigators can now explore tailored learning journeys and use a self-assessment tool to find the path that best fits their role and experience. Click [here](#) to learn more.

KOMEN RESOURCES

Komen Resources for Your Practice

Susan G. Komen® offers many resources to support you and others at the point of care. We have a robust collection of downloadable and printable breast health resources available on the [educational resources](#) page of [komen.org](#). We also have a wealth of direct patient service and education programs, which are listed below:

[Patient Care Center](#): Offers virtual, bilingual navigation services to help patients overcome non-clinical barriers, complementing existing provider-based navigation, and extending support to those without access to navigation. By partnering with Komen, health care professionals can ensure their patients receive personalized, high-quality, whole-person support — including assistance navigating clinical trials — even when site-based navigation isn't available.



Do you need help? **We're here for you.**

The Komen Patient Care Center can help meet the needs of anyone impacted by breast cancer. Our navigators offer free, personalized navigation services to patients, caregivers and family members, including breast health and breast cancer information, access to services and resources, emotional support and more.

Komen's navigators can provide:

- Information and educational resources about breast cancer screening and treatment options
- Help to better understand your breast cancer diagnosis
- Connection with resources and financial support

We hold your hand every step of the way throughout your experience.

Get connected with a Komen navigator.
1-877 GO KOMEN | helpline@komen.org

susan g.
komen.

[Metastatic Breast Cancer Series](#) provides people living with metastatic breast cancer and their loved ones a safe, collaborative space to gather information related to MBC and discover practical resources to help make decisions for improved physical and emotional health.

[Worship in Pink Program](#): A volunteer-driven breast health educational program powered by local faith-based communities. The time, support and creativity of volunteer Worship in Pink Ambassadors like YOU is key to the success of the program!

ShareForCures®: A breast cancer research registry by Susan G. Komen®, connecting researchers with information from people who have or had breast cancer. ShareForCures is an IRB-approved study, registered on clinicaltrials.gov and an opportunity for providers to increase the number of patients at their sites recruited to clinical study.



ShareForCures® is a breast cancer research registry by Susan G. Komen®, connecting researchers with information from people who have or had breast cancer.

Help discover cures to breast cancer, faster.

Make a difference in improving lives and discovering breakthroughs.

komen.org/shareforcures

“Breast Cancer Breakthroughs” series: To answer the question of “What’s next for breast cancer patients?” Susan G. Komen® is proud to present the Breast Cancer Breakthrough Series: a virtual, shareable educational series in partnership with industry experts, scientists from academic institutions and patient advocates who will directly speak to recent clinical research findings and new treatments. This series will focus on the new science and technologies that are close to becoming available to patients.

“Know More”: You shouldn’t need a medical degree to understand your breast cancer diagnosis. Komen’s Know More series brings you what you need to know about your breast cancer diagnosis and empowers you to face it head on.

“What’s New In Breast Cancer”: This section gives an overview of new breast cancer treatment breakthroughs and recent developments in research that are fueling new ways to assess risk, and prevent, detect, diagnose and treat breast cancer.

Spotlight on Clinical Trials: This educational series features blogs, podcasts and downloadable resources on clinical trials and specific trials.

Komen en Español: Educational resources and tools in Spanish.

Inflammatory Breast Cancer (IBC) Scoring System: The Inflammatory Breast Cancer (IBC) Scoring System is a proposed set of common diagnostic criteria designed for health care providers to identify IBC. It is being developed to increase diagnostic accuracy, guide treatment decisions and inclusion in clinical trials, and aid basic research.

Research Education and Advocate Community Hub (REACH): An advocate community for people to stay up to date about advancements in research, receive trusted information about breast cancer and learn about ways to get involved. REACH community members will receive periodic updates on Komen's research programs and initiatives and learn how research is making an impact for patients. You don't need a scientific background or knowledge in research to join this advocate community. All patients, survivors and co-survivors are welcome. REACH members can become more actively involved in Komen opportunities or engagements based on their interests and availability.

Center for Public Policy: Sound government action is critical for making the broad, systemic and lasting changes we need to save lives and end breast cancer forever. Our policy advocates ensure that the fight against breast cancer remains a priority among our state and national policymakers.

Komen Course – Introduction to **Oncology Navigation Standards of Professional Practice (PONT)**

Komen Patient Care Center Resource Repository

Komen Real Pink Podcast: Navigating the Cost of Breast Cancer

Navigator Resources From Our Generous Sponsors

Menarini – ELEGANT Trial Brochure (PDF)

Menarini – ESR1 Educational Brochure

Menarini – ESR1 Patient Case Study (PDF)

Novartis Patient Support | KISQALI

Novartis Patient Support | Financial Assistance for KISQALI

Pfizer – MBC Patient Journey Roadmap

Pfizer – Patient Navigation Toolkit

THANKS TO OUR SPONSORS



Navigation Nation Summit: Reflection Worksheet

Use this space to jot down your thoughts, circle what resonates, and capture ideas to carry back into your work.

Keynote: Many Faces of Navigation

If you had to describe your role as part of a bigger 'navigation team,' what superpower would you bring?

Session 2 – Culturally Humble Care Starts Here

Think of a patient experience where cultural differences played a role. Write one thing you'd do differently now:

What is a culture or identity you'd like to know how to better tailor to?

Session 3 – Sustaining Navigation in a Changing Landscape

Which part of today's session feels most exciting for the future of navigation?

One action I can take to stay connected and grow in the field is:

My Follow-Up Map

Write down anyone you'd like to connect with or learn more about (panelists, peers, or organizations).

Name/Org:

Why connect:

Name/Org:

Why connect:

Name/Org:

Why connect:

Name/Org:

Why connect:

Session 4 – Beyond the Job Description: Supporting Navigators as People

On a scale of 😞 to 🌟, How comfortable are you with knowing when and how to end the navigation relationship with a patient? Circle one!

😞 = Very uncomfortable

😊 = Pretty comfortable

😐 = A little uneasy

🌟 = Very comfortable / confident

😌 = Neutral / in-between

What's one strategy you'll try to bring respectful closure for both you and your patient?

Breakout 1A – Navigating Clinical Trials with Confidence

Biggest barrier my patients face with clinical trials:

My new approach:

Breakout 1B – Strengthening Patient–Provider Relationships

One phrase or question I can share with patients to help them *speak up* with providers:

Session 5 – Financial Navigation: Beyond Assistance

The #1 money-related challenge my patients face is:

What's something I can do to support more sustainable or long-term financial health for the patient beyond securing financial aid?

My Follow-Up Map

Write down anyone you'd like to connect with or learn more about (panelists, peers, or organizations).

Name/Org:

Why connect:

Name/Org:

Why connect:

Name/Org:

Why connect:

Name/Org:

Why connect:

New Learning Journeys Are Here! Find the training path that fits *your* role and experience.

With our new **Navigator Learning Journeys** and **self-assessment tool**, you can explore tailored courses, from Foundations to Advanced practice and grow your skills with confidence.

Find your journey at: <https://navigationnation.learnupon.com/>

Session 6 – Build Your Resource Kit

Which new resource from today is going straight into my toolkit?

Quick audit: My resource kit is currently...

- ☐ Overflowing but hard to find things
- ☐ Outdated and needs fresh resources
- ☐ Scattered and needs organizing
- ☐ Solid, but I'd like to add more
- ☐ Just right and ready to use

One thing I'll do to improve:

Join Today

Join Today! Enroll in the training program by registering on our online training site. You will also receive updates about new training opportunities going forward.

While designed for patient navigation professionals, the content may be beneficial for patients, caregivers and other members of the care team, and all are welcome.



New Learning Journeys Are Here!

Find the training path that fits *your* role and experience. With our new **Navigator Learning Journeys** and **self-assessment tool**, you can explore tailored courses, from Foundations to Advanced practice and grow your skills with confidence.

Find your journey at: <https://navigationnation.learnupon.com/>